



TECHNOLOGY  
ASSET  
LIFECYCLE  
MANAGEMENT

## STRATEGICALLY PLANNING FOR THE FUTURE OF YOUR PRODUCTS

Dynamic's end-of-life (EOL) and lifecycle management services are designed to ensure seamless transitions and continuity for any changes that affect the components in your medical devices. When a part is about to become obsolete, we provide fully researched recommendations for your next replacement as well as create a plan to keep your team informed on EOL dates, the impact of potential disruptions on your supply chain, and options for making a last-time buy for the corresponding parts — all while maintaining a smooth change management process.



# EOL DATA ANALYSIS

When it comes to devices that play a critical role in the success and efficacy of your work, surprises are typically unwelcome. This is why we utilize our EOL data collection and analysis to help keep you informed.

## EOL Insight Portal

For each of our customers, we provide a consolidated view of lifecycle roadmaps with data integrated from Dynamic's 500+ OEM and technology partners; this is known as our EOL insight portal. With advanced, real-time EOL statuses for all the parts in your project, your team has the foresight to plan more efficiently, begin transition evaluations earlier, and avoid the risk of stockouts.

## AUTOMATED EOL NOTIFICATIONS

We recognize the critical importance of maintaining business continuity for our customers, and so we provide transparency into any upcoming changes regarding your products' lifecycles.

## Customized Email Notification System

Automated alerts are delivered to key stakeholders in your company, informing them of impending EOL dates and triggering a proactive EOL transition process. This yields more efficient client workforce management, a reduced number of stockouts, and fewer surprises overall — so you know exactly what the plan is for your products.

## INTEGRATION WITH SUPPLY CHAIN SERVICES

Within the scope of our supply chain services, we integrate a holistic view that illustrates the projected impact of EOL and transition processes.



## Business Impact Analysis

We provide a breakdown of how potential product disruptions might affect your business, and subsequently devise recovery strategies. The results of this analysis help your team make better business decisions, gain critical insights into total cost of ownership, plan more effectively, and reduce risks.



## BOM MANAGEMENT

Through our Bill of Materials (BOM) management, we compile comprehensive data lists that identify each of the assemblies, parts, or raw materials used in developing a finished product. BOMs act as the blueprint for a product, as an essential part of the device master record, and they are required to ensure products are constructed without production delays, high operational costs, and quality issues.



## Next-Generation Research and Proposal

When the time comes to transition to a new component or search for the next generation, we provide a comprehensive view of available replacement options. This helps with proactive product development planning and delivers early awareness, so no unexpected changes suddenly arise when you move on to a newer product version.

## PMO Management

With our project management organization (PMO), we deliver a systemized process for EOL and transitions to limit human errors and delays.

# INTEGRATION WITH CUSTOMER CHANGE MANAGEMENT PROCESSES

We integrate into our customers' change management processes, ensuring that we follow standardized methods and procedures while tracking what is necessary for making a change complete.

## Customized Process that Connects with Our Customers' Processes

We create a customized connection to our customers' change processes, focusing on areas such as notifications, evaluation, testing, validation, release to production, data transfer, and workflow. Timely and seamless stakeholder involvement in change processes allows your change teams to be more proactive and minimize emergency transitions.



## LAST-TIME BUY

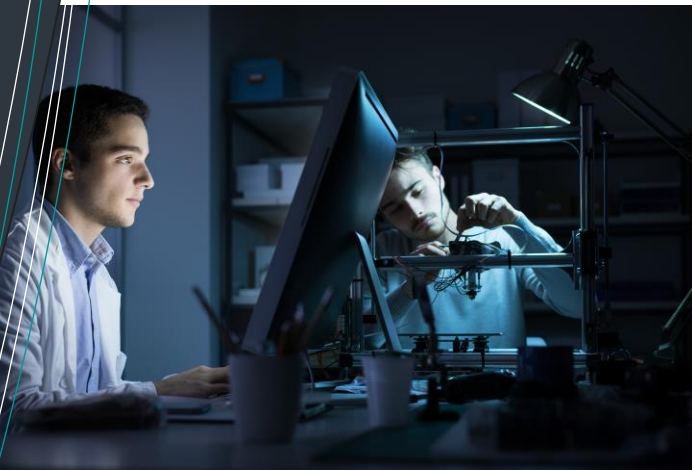
When you find a product or component that delivers the results you need, it can be difficult to part ways when it goes EOL. This is why we offer last-time buy solutions, where we purchase the entire stock that is on the market for a particular component or product and store it in our warehouse for your team to use in the future.

### On-Hand Stock to Bridge EOL and Time to Production of Next Model

We ensure that we have a specified amount of product on hand to bridge EOL and prevent any interruptions in your business. You can rest assured that we will have a designated quantity of your product readily available at a given time, so you don't encounter any roadblocks to revenue recognition, stockouts, or customer delays.

## SUMMARY

Dynamic's end-of-life and lifecycle management services provide the security that comes with knowing all the details surrounding your products are covered. When your team needs to search for a replacement or next-generation model, we will already have recommendations prepared as well as proof that demonstrates why our suggestions are the right ones for your specific organization. Additionally, we always keep you informed on EOL dates surrounding your products, so you know ahead of time if and when you will need to make significant changes. We don't leave you hanging; we create a complete roadmap to guide you and your end users through the lifecycle of your products and beyond.





## WHY DYNAMIC?

With more than 40 years' experience, Dynamic has demonstrable longevity in the technology supply chain, with a track record of providing high-value, quality-focused services. We are solution-driven problem solvers, thinking outside the box and consistently striving to deliver creative solutions developed through data analysis and customized to each client's unique business. Our relationships with 500+ technology vendors provide us with a comprehensive partner network through which we leverage market trends, keep a pulse on the latest tech innovations, and strategically identify the most effective, efficient products and processes to achieve the right business outcomes for our customers. Quality is at the forefront of everything we do, and we are ISO 9001 and ISO 13485 certified. As a benchmarked member of the Diverse Manufacturing Supply Chain Alliance (DMSCA), we have a strong commitment to diversity and a laser focus on maintaining high OTIF (on-time, in-full) and RFT (right the first time) scores. We are dedicated to delivering custom solutions on-spec, on-time — every time.



23400 Industrial Park Court  
Farmington Hills, MI 48335  
(248) 473-2200 or (866) 257-2111  
[www.dccit.com](http://www.dccit.com)